

Single anterior ceramic crown cementation with 3M™ RelyX™ Ultimate Adhesive Resin Cement: perfect shade match

A case study by Dr. Carlos Eduardo Sabrosa, DDS, MSD, DScD featuring 3M™ RelyX™ Ultimate Adhesive Resin Cement



Fig. 1: Fractured anterior ceramic crown on tooth 11 in need of retreatment.



Fig. 2: Situation after tooth preparation.



Fig. 3: Shade selection. Best match was found for A1.

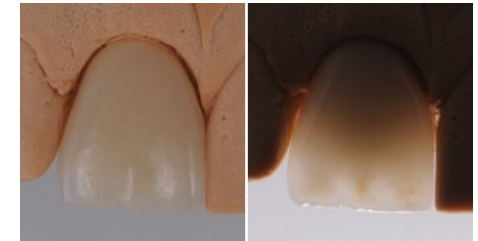


Fig. 4: Fabrication of the Lithium Disilicate Crown and fitting to gypsum model: Good esthetics and translucency.

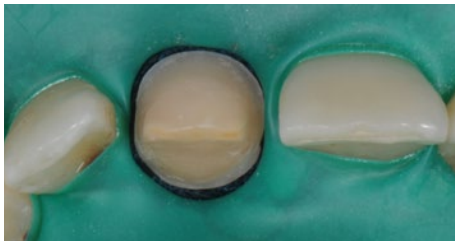


Fig. 5: Placement of retraction cord and rubber dam for isolation and intraoral crown fitting.

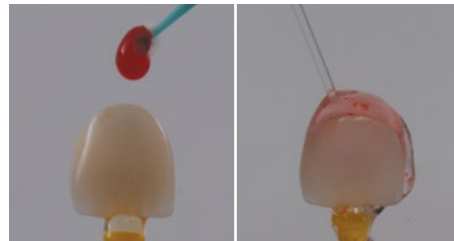


Fig. 6: The glass ceramic crown is pretreated with hydrofluoric acid, rinsed with water and air dried with oil-free air.

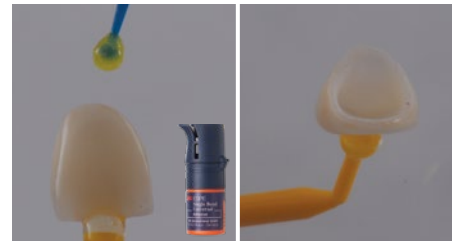


Fig. 7: Application of 3M™ Single Bond Universal Adhesive to the bonding surface rubbing it in for 20 seconds. Air thinning with oil-free air for five seconds until no more ripples are observed and all the solvent is gone. Cement application directly into the pretreated crown.



Fig. 8: Application of 3M™ Single Bond Universal Adhesive to the bonding surface rubbing it in for 20 seconds. Air thinning with oil-free air for five seconds until no more ripples are observed and all the solvent is gone.

Single anterior ceramic crown cementation with 3M™ RelyX™ Ultimate Adhesive Resin Cement: perfect shade match cont.



Fig. 9: Seating of the crown under firm finger pressure.

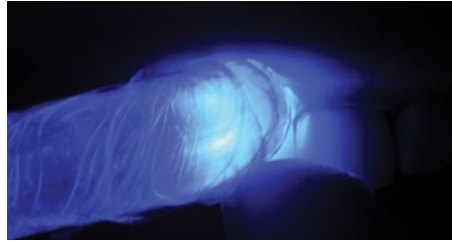


Fig. 10: Tack curing for 1-2 seconds.



Fig. 11: Removal of excess cement in the gel stage with a scaler while holding the crown in place.



Fig. 12: Light curing for 20 seconds per restoration surface.



Fig. 13: Final situation with good esthetics and color match.

3M

3M Oral Care
2510 Conway Avenue
St. Paul, MN 55144-1000 USA

Phone 1-800-634-2249
Web 3M.com/Dental

3M.com/DentalCements

Before using the products described, please refer to the instructions for use provided with the product packages.

The featured 3M product may be known with an alternative name in different regions.

3M and RelyX are trademarks of 3M or 3M Deutschland GmbH. Used under license in Canada. All other trademarks are owned by other companies. Please recycle. Printed in U.S.A. © 3M 2017. All rights reserved.

Dr. Sabrosa has received an honorarium from 3M Oral Care. 70-2013-7012-2